

# Software for Data Management of Multiple Force Gauges Force Logger Plus

Manages data up to 4 pcs of force gauges simultaneously.

Acquires single and continuous data to show pass-fail result quickly and clearly.

Manages force gauge by its serial No. with name, and calibration data.

Easy connection by the supplied USB hub.

## [Main Function: Data Management of Individual Force Gauge]

### - Easy management of force gauge

Register each force gauge by its serial No., and manage its name and calibration date, etc.

### - Easy management of the operator

Register the name and department of the operator for individual force gauge and record it with measurement data.

The screenshot displays the main interface of the Force Logger Plus software. It features a menu bar (Batch Operation, Individual, Statistics, Setup, Help) and a toolbar with icons for file operations, gauge selection, and data acquisition. Below the toolbar, four gauge channels are visible, each with its own settings panel. The channels are: Gauge1 (ZTA-50N), Gauge2 (ZTS-50N), Gauge3 (DSV-50N), and Gauge4 (DST-50N). Each channel shows the operator's name, test conditions (High/Low setpoints), and a real-time measurement display. At the bottom, there are data tables for each gauge, showing columns for Force, Unit, Displacement, Unit, Judge, and P. The results for the four gauges are displayed as OK, NG, OK, and OK respectively.

### - Test condition setting

Set the test sample name and judgement conditions (high, low setpoints).

### - Pass-fail judgement

Shows recorded data and the pass-fail result of each force gauge clearly.

The diagram illustrates the hardware setup and the resulting statistics display. On the left, a laptop is connected to four force gauges via a USB hub. An arrow points to the 'All Statistics' window on the right, which provides a summary of data for all gauges.

	Gauge 1	Gauge 2	Gauge 3	Gauge 4	Statistics
Model	ZTA-50N	ZTS-50N	DSV-50N	DST-50N	----
Serial Number	354060	353847	123456	234567	----
Nick Name	Left	Manufacturing	Top measure	Jack Only	----
Maximum	7.77	8.34	19.75	18.92	19.75
Minimum	5.00	4.92	11.18	11.51	4.92
Average	6.02	6.25	17.50	12.28	10.61
Data Count	38	40	41	40	159
NG Count	0	3	3	0	6

Stops acquiring data while Statistics is displayed.  
The data acquired from a force gauge is NOT added to Data Table.

### - Statistics display

Shows statistics including the Max, Min, and Ave. values for each force gauge and all force gauges.

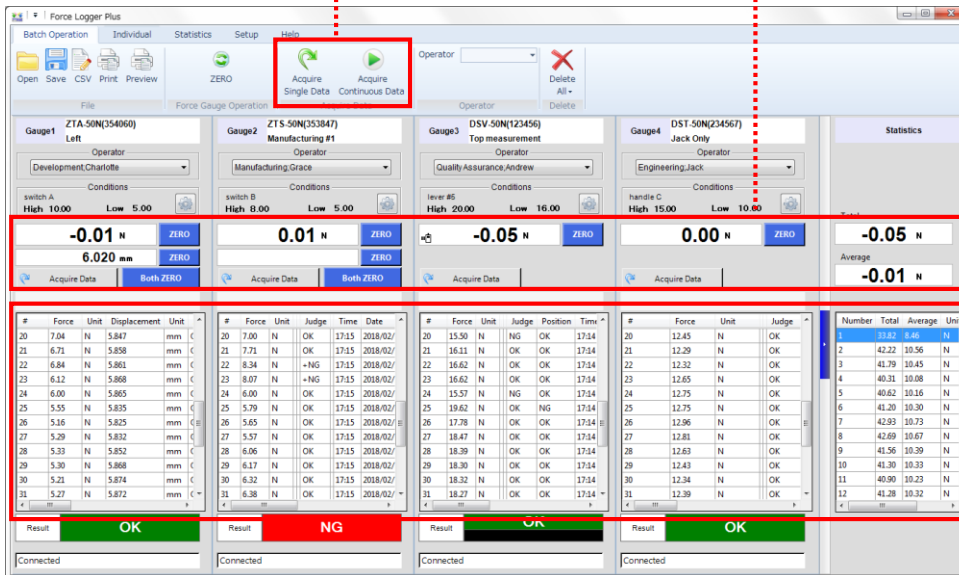
[Useful function 1: Batch Operation]

**- Batch operation**

Single and continuous data recording of 4pcs (at max.) force gauges at the same time.

**- Real-time value display**

The real-time value of each force gauge, total and average real-time value of all force gauges are displayed.



**- Recorded data**  
The Total and Ave. values for each force gauge and all force gauges are displayed.

[Useful Function 2: Management of Force Gauge]

**- Force gauge registration**

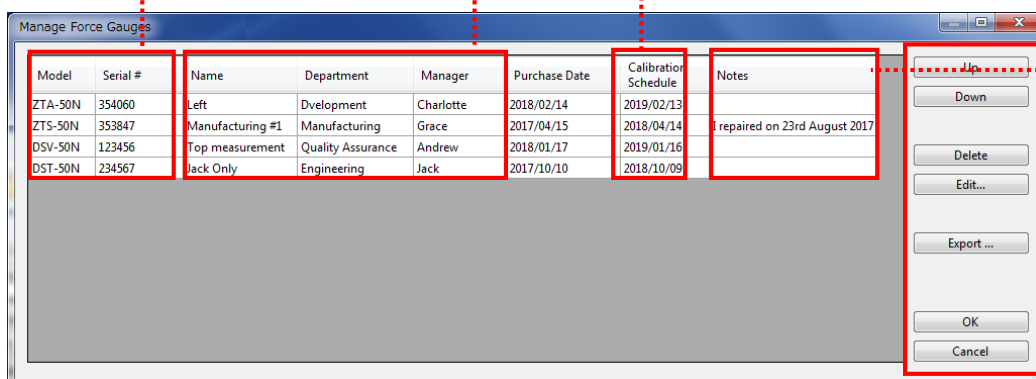
Automatic registration of its serial No. and model.

**- Detailed information**

Enables you to input its name, responsible person and department.







**- Calibration information**

Allows calibration date registration.



**- Comment**  
Notes such as repair records can be input.

**- Edit**  
Allows revision of registered contents. Password protection is possible for security.



Specifications						
Model	Force Logger Plus-J			Force Logger Plus-I		
Sampling rate	Max. 10 data / sec					
Resolution	Determined by force gauge's capacity. (Signed 4-digit) (eg: 0.001N when using 5N range.)					
Functions	Statistics output, CSV format conversion, Printing, Force gauge setting, Testing condition, Force gauge management, Operator management, Password protection					
Output	CSV format conversion, Printing					
Languages	Japanese, English					
Compatible force gauges*	ZTS	ZTA	eZT	DST	DSV	HTGS/HTGA DTXS/DTXA
						
Required cable	Supplied USB cable for force gauge					
Accessories	USB hub with power adapter (A type plug adapter only for Japan)			USB hub with power adapter (A and C type plug adapter for Overseas)		

\* It can acquire force data together with the displacement (angle) data when connected with the ZTA, eZT, HTGA, and DTXA series. (Requires connecting linear scale or angle meter.)

\* It can record the posture change when connecting DSV digital force gauge series.

\* Contact us for compatibility of other models.

Operating Environment	
OS	Windows 7/8/8.1/10
Hardware	CPU: Pentium4(1GHz or more) or more is recommended. Memory: 2GB or more is recommended. Hard disk (Data storage area) : 10GB or more is recommended
Platform	Microsoft. NET Framework 4.6 or later
Execute Environment	Microsoft Internet Explorer 6.0 or later Windows installer 3.1 or later
Image Size	Resolution 1280×768 pixel or more
Connecting Port	USB1.1, USB2.0 connector (force gauges equipped with USB connector)

Product Configuration	
Force Logger Plus CD	The supplied USB hub*
	

\* The adapter for USB hub is supplied.

[Printing Sample]

	Gauge 1	Gauge 2	Gauge 3	Gauge 4	Statistics
Model	ZTA-50N	ZTS-50N	DSV-50N	DST-50N	---
Serial Number	354060	353847	123456	234567	---
Nick Name	Left	Manufacturing #1	Top measurement	Jack Only	---
Maximum	7.77	9.34	19.75	19.92	19.75
Minimum	5.00	4.92	11.18	11.51	4.92
Average	6.02	6.25	17.50	12.28	10.61
Data Count	38	40	41	40	159
NG Count	0	3	3	0	6

#	Gauge 1			Gauge 2			Gauge 3			Gauge 4			Statistics		
	Force	Unit	Disp.	Force	Unit	Judge	Force	Unit	Position	Force	Unit	Judge	Total	Average	Unit
1	5.81	N	5.851	5.27	N	OK	11.18	N	OK	11.56	N	OK	33.82	8.46	N
2	5.87	N	5.857	5.73	N	OK	18.47	N	OK	12.15	N	OK	42.22	10.56	N
3	5.93	N	5.860	5.91	N	OK	17.68	N	OK	12.27	N	OK	41.79	10.45	N
4	5.57	N	5.855	5.78	N	OK	16.51	N	OK	12.45	N	OK	40.31	10.08	N
5	5.99	N	5.860	5.63	N	OK	16.55	N	OK	12.45	N	OK	40.62	10.16	N
6	5.94	N	5.861	5.80	N	OK	17.30	N	OK	12.36	N	OK	41.20	10.30	N
7	6.15	N	5.841	6.66	N	OK	17.84	N	OK	12.28	N	OK	42.93	10.73	N
8	6.28	N	5.841	6.74	N	OK	17.57	N	OK	12.10	N	OK	42.69	10.67	N
9	6.27	N	5.848	6.04	N	OK	17.42	N	OK	11.83	N	OK	41.56	10.39	N
10	6.19	N	5.853	5.85	N	OK	17.53	N	OK	11.73	N	OK	41.30	10.33	N
11	6.06	N	5.859	6.29	N	OK	17.04	N	OK	11.51	N	OK	40.90	10.23	N
12	5.72	N	5.861	6.40	N	OK	17.31	N	OK	11.85	N	OK	41.28	10.32	N
13	5.70	N	5.851	7.03	N	OK	17.71	N	OK	11.94	N	OK	42.38	10.60	N
14	6.27	N	5.842	5.48	N	OK	17.89	N	OK	11.84	N	OK	41.48	10.37	N
15	7.16	N	5.845	5.45	N	OK	17.38	N	OK	11.91	N	OK	41.90	10.48	N
16	7.77	N	5.844	5.04	N	OK	17.37	N	OK	12.15	N	OK	42.33	10.58	N
17	7.24	N	5.845	6.00	N	OK	17.41	N	OK	12.13	N	OK	42.78	10.70	N
18	7.31	N	5.842	6.45	N	OK	17.38	N	OK	12.18	N	OK	43.32	10.83	N
19	7.19	N	5.841	6.48	N	OK	17.37	N	OK	12.16	N	OK	43.20	10.80	N
20	7.04	N	5.847	7.00	N	OK	15.50	N	OK	12.45	N	OK	41.99	10.50	N
21	6.71	N	5.858	7.71	N	OK	16.11	N	OK	12.29	N	OK	42.82	10.71	N
22	6.84	N	5.861	8.34	N	+NG	16.62	N	OK	12.32	N	OK	44.12	11.03	N
23	6.12	N	5.868	8.07	N	+NG	16.62	N	OK	12.65	N	OK	43.46	10.87	N
24	6.00	N	5.865	6.00	N	OK	15.57	N	OK	12.75	N	OK	40.32	10.08	N
25	5.55	N	5.835	5.79	N	OK	19.62	N	NG	12.75	N	OK	43.71	10.93	N
26	5.16	N	5.825	5.65	N	OK	17.78	N	OK	12.96	N	OK	41.55	10.39	N

[Cautions]

- Specifications are subject to change without prior notice.
- Do not copy and use this content without authorization.

[Notes for Purchase]

- Separately sold force gauge and its supplied cable is required to use this product.
- The copyright of this product is protected by Japanese Copyright Act and Universal Copyright Convention.
- No returns accepted. Please ensure to confirm its working condition, operating environment, etc.

**IMADA CO., LTD**

99 Jinnoshinden-cho aza Kanowari Toyohashi  
Japan 441-8077

Tel: +81-(0)532-33-3288

Fax: +81-(0)532-33-3866

E-mail: [info@forcegauge.net](mailto:info@forcegauge.net)

Website: <http://www.forcegauge.net/en/>



Visit our website for more information on wide product specifications, measurement applications and videos.